

HabasitLINK® Sprockets - 2-1/2" Pitch Belting

Sprocket Series M6400



M = Modular belts						
Belt pitch						
S = sprocket one-piece; Z = split sprocket						
Number of teeth						
Shaft size						
Shaft type: Q = square shaft; R = round shaft						
Material: 6 = POM; 8 = PA						
M	63	S	13	60	Q	6

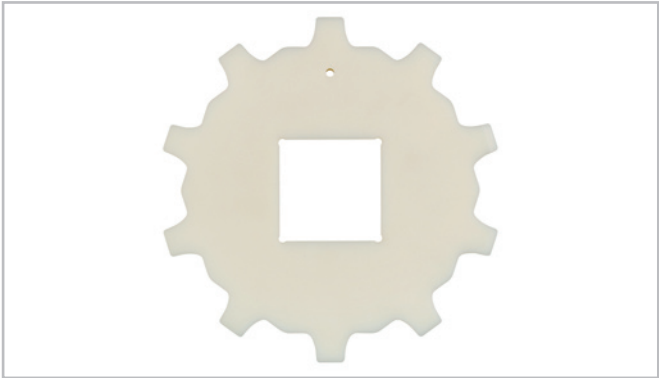
Sprocket availability

Type	Number of teeth	Diam. of pitch Ø d _p		A ₁		Hub width B _L		Square bore Q		Ø Round bore R		Standard material
		mm	inch	mm	inch	mm	inch	mm	inch	mm	inch	
S-C1	10	206.4	8.1	90.2	3.55	27	1.06	40 / 60 / 90	1.5 / 2.5 / 3.5	30 / 40 / 60	1 / 1.5 / 2.5	PA
S-C1	12	246.4	9.7	110.2	4.34	27	1.06	40 / 60 / 90	1.5 / 2.5 / 3.5	30 / 40 / 60	1 / 1.5 / 2.5	PA
S-C1	13	266.4	10.5	120.2	4.73	27	1.06	40 / 60 / 90	1.5 / 2.5 / 3.5	30 / 40 / 60	1 / 1.5 / 2.5	PA
S-C1	15	306.7	12.1	140.4	5.53	27	1.06	40 / 60 / 90 / 120	1.5 / 2.5 / 3.5 / 4.5	30 / 40 / 60 / 90	1 / 1.5 / 2.5	PA
S-C1	20	407.6	16.1	190.8	7.51	27	1.06	40 / 60 / 90 / 120	1.5 / 2.5 / 3.5 / 4.5	30 / 40 / 60 / 90	1 / 1.5 / 2.5	PA

S-C1: machined sprockets. Other sprocket and hub sizes on request.

Key ways for round bore shape follow European standards for metric sizes and US standards for imperial sizes. For detailed dimensions see table in the Design Guide.

Other materials available on request.



Sprocket one-piece (solid)

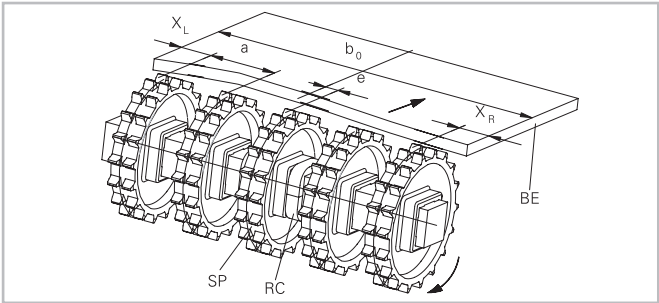
For a 100 mm wide belt double-row sprockets are recommended.

HabasitLINK® Sprockets - 2-1/2" Pitch Belting

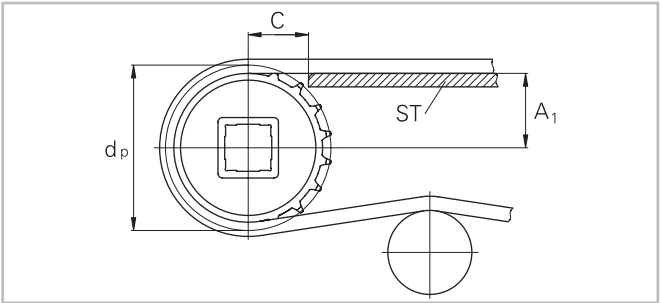
Sprocket Series M6400



Sprocket arrangement



BE Belt
RC Retainer
SP Sprocket
b₀ belt width



The distance **C** between the sprocket axis and the slider support **ST** is minimal 66 mm (2.6").

Wearstrips

Between driving shaft and idling sprockets or rollers the belt is carried by a slider support furnished with longitudinal wear strips from UHMW Polyethylene or other suitable material.

Sprocket positioning

For correct positioning of the center sprocket divide the belt width by the link increment. The rounded result will be an even or an odd number. These numbers are the criteria for offset or no offset, see table.

Belt type	Sprocket spacing a		Sprocket edge distance (minimal)		Criteria for center sprocket position	Result of formula (rounded)	Offset e	Remarks
	minimal	maximal	X _L mm inch	X _R mm inch				
	mm inch	mm inch					mm inch	
M6420	50 2	150 6	25 1	25 1	b ₀ / 50 b ₀ / 1.97	even number (2, 4, 6 ...)	25 1	Offset to which side right or left side
						odd number (3, 5, 7 ...)	0 0	no offset

HabasitLINK® Sprockets - 2-1/2" Pitch Belting

Sprocket Series M6400



Numbers of sprockets and wearstrips

Standard belt width (nominal)		Number of sprockets per shaft	Number of wearstrips	
mm	inch	min. number	Carryway (top)	Returnway (bottom)
100	4	1	2	2
200	8	2	2	2
300	12	2	3	3
400	16	3	3	3
500	20	3	4	3
600	24	3	4	3
700	28	5	5	4
800	32	5	5	4
900	36	5	6	5
1'000	40	7	6	5
1'100	43	7	7	5
1'200	47	7	7	5
1'300	51	9	8	6
1'400	55	9	8	6
1'500	59	9	9	7
1'600	63	11	9	7
1'700	67	11	10	7
1'800	71	11	10	7
1'900	75	13	11	8
2'000	79	13	11	8
2'100	83	13	12	9
2'200	87	15	12	9
2'300	91	15	13	10
2'400	94	15	13	10
2'500	98	17	14	10
2'600	102	17	14	10
2'700	106	17	15	11
2'800	110	19	15	11
2'900	114	19	16	12
3'000	118	19	16	12

The number of sprockets depends on the belt load and may be different for driving and idling shafts.
For calculation of correct sprocket number please use LINK-SeleCalc.

Product liability, application considerations

If the proper selection and application of Habasit products are not recommended by an authorized Habasit sales specialist, the selection and application of Habasit products, including the related area of product safety, are the responsibility of the customer.
All indications / information are recommendations and believed to be reliable, but no representations, guarantees, or warranties of any kind are made as to their accuracy or suitability for particular applications. The data provided herein are based on laboratory work with small-scale test equipment, running at standard conditions, and do not necessarily match product performance in industrial use. New knowledge and experiences can lead to modifications and changes within a short time without prior notice.
BECAUSE CONDITIONS OF USE ARE OUTSIDE OF HABASIT'S AND ITS AFFILIATED COMPANIES CONTROL, WE CANNOT ASSUME ANY LIABILITY CONCERNING THE SUITABILITY AND PROCESS ABILITY OF THE PRODUCTS MENTIONED HEREIN. THIS ALSO APPLIES TO PROCESS RESULTS / OUTPUT / MANUFACTURING GOODS AS WELL AS TO POSSIBLE DEFECTS, DAMAGES, CONSEQUENTIAL DAMAGES, AND FURTHER-REACHING CONSEQUENCES.