

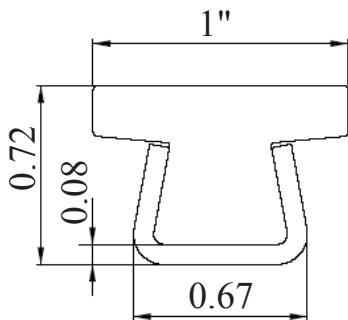
• Part # **CVR-23**

Guide rail 1" wide  
Narrow Profile

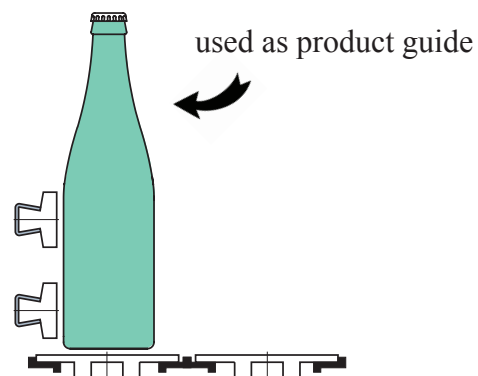


Standard length is 10 feet

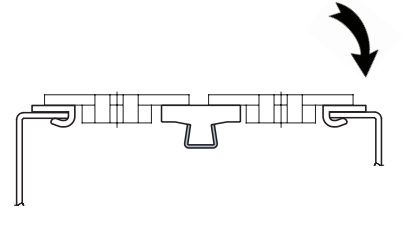
Tolerance: +/- 0.030  
Min. bend radius: 6.3"



Large flat top style



used as chain guide or belt support

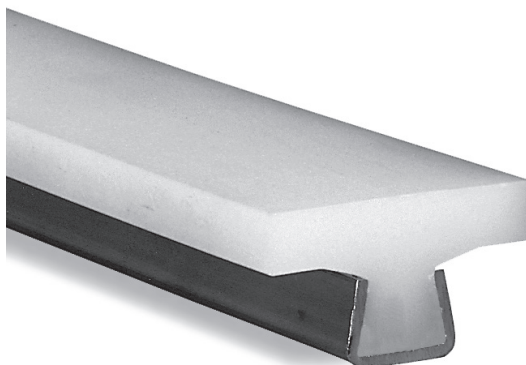


used as modular belt support



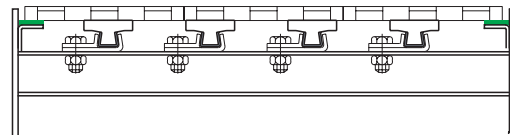
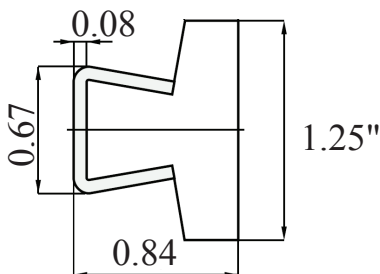
• Part # **CVR-16**

Guide rail 1-1/4" wide

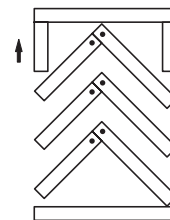


Standard length is 10 feet

Tolerance: +/- 0.030  
Min. bend radius: 6.3"



CHEVRON pattern is recommended for heavy loads (accumulation tables, etc...). Chain wear is evenly distributed throughout the width.



See page 19 for guide rail clips

