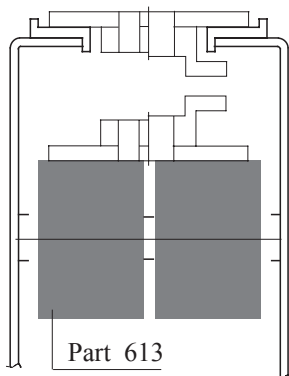
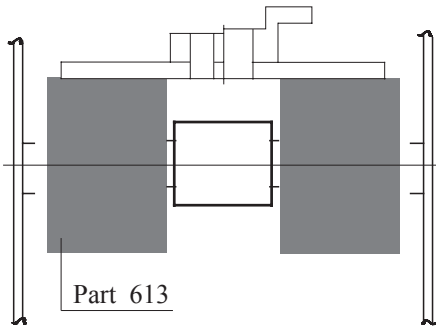
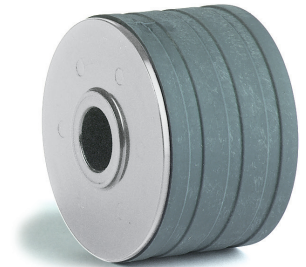
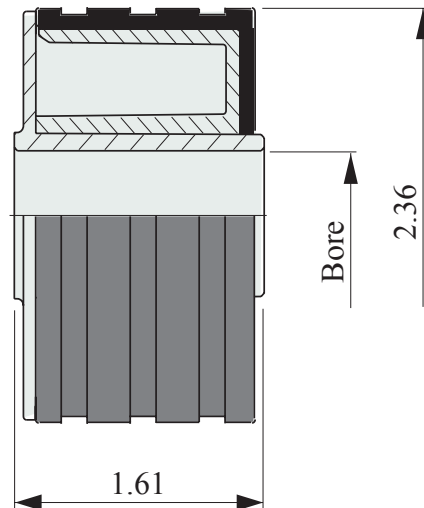


Single Return Roller

Single roller with rubber surface 2.36" dia.



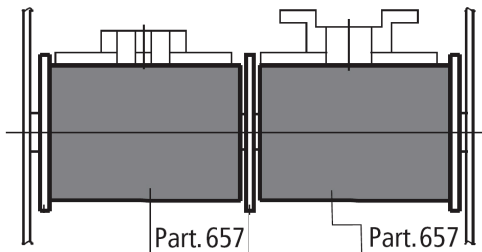
Code	Bore
613-632472	1/2"
613-635142	3/4"



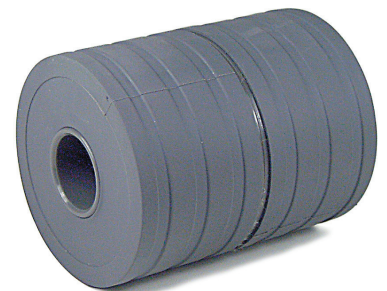
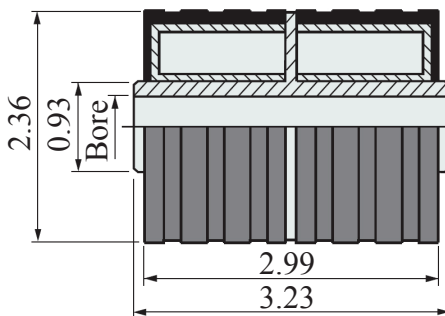
- Characteristics: completely closed design. Less noise even in high speed applications. Hub in acetal for low friction.
- Material : roller in acetal POM (grey). External SBR rubber surface (grey). 60 Shore hardness.

Double Return Roller

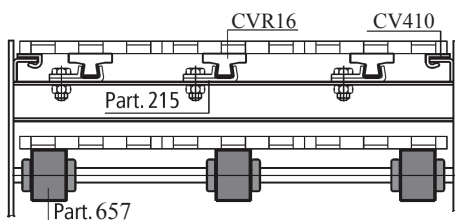
Double roller with rubber surface 2.36" dia.



Code	Bore
657-656982	1/2"
657-657002	5/8"
657-656692	3/4"
657-657022	20mm



Return rollers can also be used for modular belt applications.



- Characteristics: completely closed design. Less noise even in high speed applications. Hub in acetal for low friction.
- Material : roller in acetal POM (grey). External SBR rubber surface (grey). 60 Shore hardness.