

# Mounted Bearings

## 3 Bolt Flange



PA FV polyamide housing

- Housing in reinforced polyamide PA FV resin ( black )
- High quality ball bearing in chrome steel
- Protection cover in polypropylene PP (orange or yellow)
- Seal and O-Ring in NBR rubber ( black )
- Ball type nickel plated brass greasing nipple
- Reinforcing bushings on mounting holes and washers in stainless steel AISI 304
- Stainless steel AISI 303 safety ring
- Bottom seal in PVC ( black ).

Continuous operating temperature

In air : -4 to + 140 °F ( - 20 to + 60 ° C).

Maximum allowed misalignment: 2°.

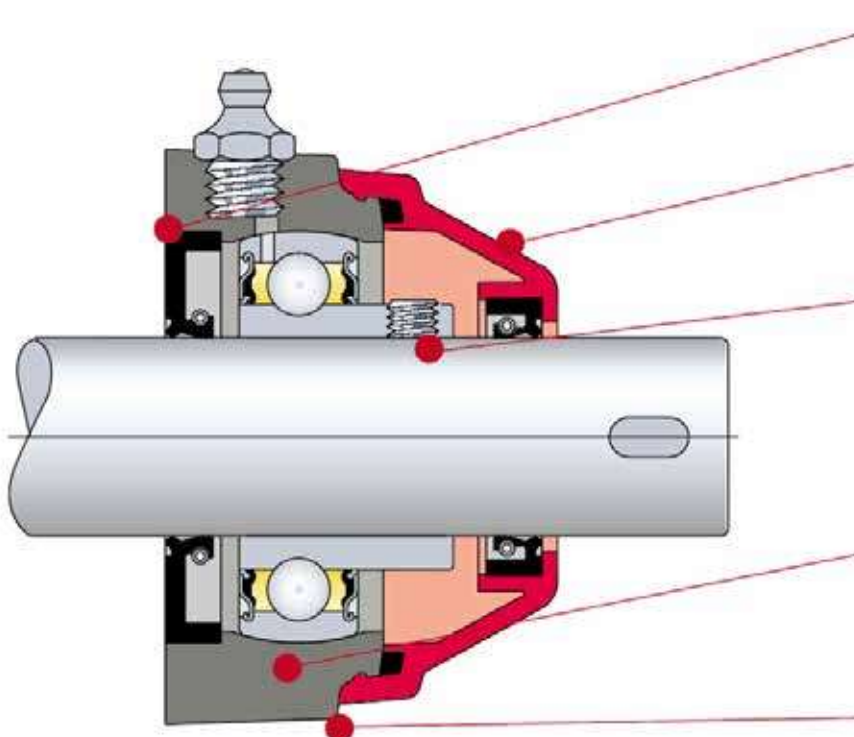
PP FV polypropylene housing

- Housing in reinforced polypropylene PP FV resin (white)
- High quality ball bearing in chrome steel
- Protection cover in polypropylene PP (orange or yellow) with
- Seal and O-Ring in NBR rubber (black).
- Ball type stainless steel AISI 316 greasing nipple
- Reinforcing bushings on mounting holes and washers in stainless steel AISI 316
- Stainless steel AISI 303 safety ring
- Bottom seal in PVC ( black ).

Continuous operating temperature

In air : -4 to + 140 °F ( - 20 to + 60 ° C).

Maximum allowed misalignment: 2°.



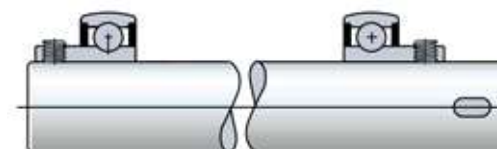
### Waterproof housing

The waterproof sealing system guarantees protection of the bearing from the external environment

### Inspectable bearing

The clip - on protection cover can be removed for bearing inspection

### Locking by grub screws



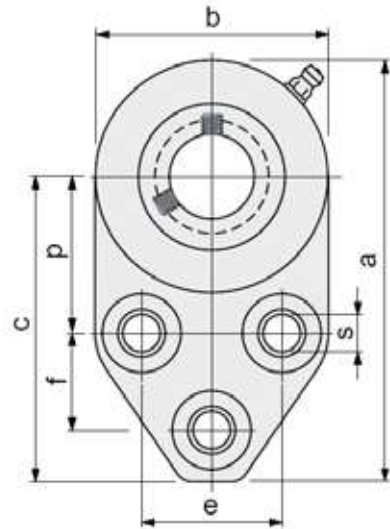
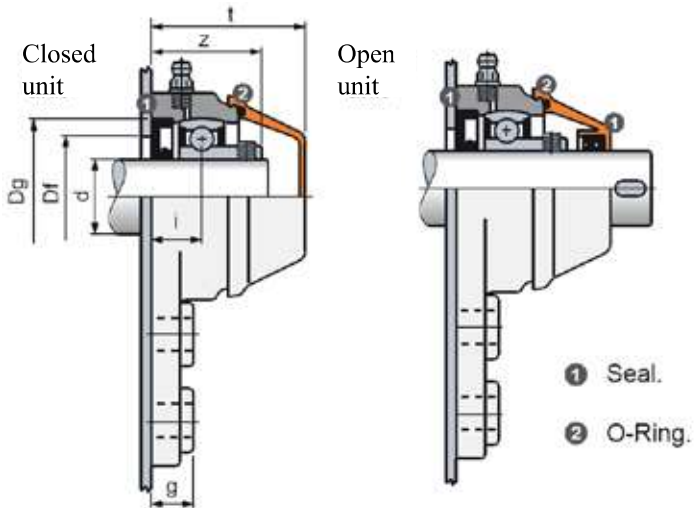
### Hygiene

The sealing of the housing guarantees maximum hygiene

### ISO dimensions

The overall dimensions can be interchanged with the corresponding cast iron type bearings

# Mounted Bearings



3 bolt hole designs :

Type 1



Type 2



Type 3



| Shaft<br>dia.<br>d | a    | b    | c    | p    | e    | f    | s    | g    | i    | z    | t    | Dg   | Df   |      | Brg load in lbs |       |
|--------------------|------|------|------|------|------|------|------|------|------|------|------|------|------|------|-----------------|-------|
|                    |      |      |      |      |      |      |      |      |      |      |      |      | Min  | Max  | Dyn.            | Stat. |
| 3/4"               | 4.89 | 2.71 | 3.54 | 1.81 | 1.63 | 1.13 | 0.43 | 0.55 | 0.65 | 1.37 | 1.93 | 1.85 | 1.58 | 1.77 | 2249            | 1394  |
| 1"                 | 4.89 | 2.71 | 3.54 | 1.81 | 1.63 | 1.13 | 0.43 | 0.55 | 0.70 | 1.47 | 2.05 | 2.05 | 1.77 | 1.97 | 2429            | 1574  |
| 1-1/4"             | 5.46 | 3.20 | 3.85 | 2.06 | 1.87 | 1.25 | 0.43 | 0.55 | 0.79 | 1.67 | 2.17 | 2.44 | 1.97 | 2.36 | 3396            | 2249  |
| 1-1/2"             | 6.46 | 3.94 | 4.49 | 2.36 | 1.97 | 1.22 | 0.51 | 0.68 | 0.87 | 1.87 | 2.62 | 3.15 | 2.56 | 3.07 | 5083            | 3531  |

All dimensions are in inches.

| Shaft<br>dia.<br>d | Bearings series with black reinforced polyamide housing |  | Bearings series with white polypropylene with solid flange. |  | Codes for closed covers c/w o'ring |        | Codes for open covers c/w seal and o'ring |        |
|--------------------|---|--|---|--|------------------------------------|--------|---|--------|
|                    | Bearing units with seal and orange closed cover         | Bearing units with seals and orange open cover | Bearing units with seal and orange closed cover             | Bearing units with seals and orange open cover | Orange                             | Yellow | Orange                                    | Yellow |
|                    |   |  |   |  |                                    |        |   |        |
|                    | 3/4"  | 1"   | 1-1/4"  | 1-1/2"   | 63519                              | 609633 | 691622                                    | 609643 |
| 3/4"               | 606213 (3)  | 606223 (3)                                     | 607293 (1)  | 607313 (1)                                     | 63519                              | 609633 | 691622                                    | 609643 |
| 1"                 | 691422N (3)   | 691442N (3)                                    | -   | -  | 63194                              | 609653 | 691572                                    | 609663 |
| 1-1/4"             | 691432 (1)  | 691452 (1)                                     | -   | -  | 63154                              | 609673 | 691582                                    | 609683 |
| 1-1/2"             | 606233 (2)  | 606243 (2)                                     | -   | -  | 600882                             | 609713 | 691602                                    | 609723 |

(1,2,3) number in bracket indicates the bolt hole pattern.