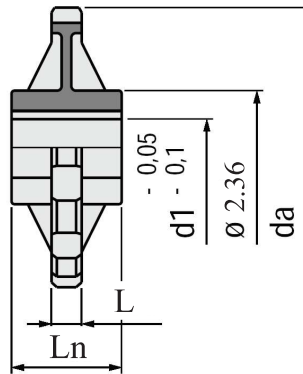


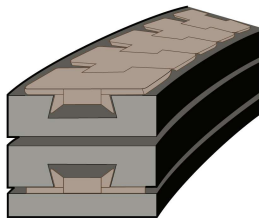
Split Sprocket #880, 880-Tab

Material: Sprocket in reinforced polyamide (black).
Bolts in stainless steel AISI 304, nuts in nickel plated brass.

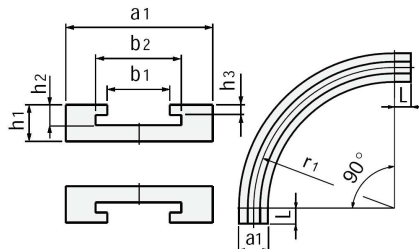
Chain #880-TAB



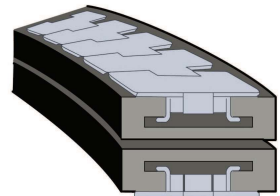
Part #	# Teeth	da	L	Ln	Bore d1
880-662171	10	4.82	0.625	2.30	stockbore
880-663201	12	5.80	0.625	2.30	1
880-663241	12	5.80	0.625	2.30	1-1/4
880-617553	12	5.80	0.625	2.30	1-1/2



Bevel type



Corner Tracks



TAB type

Materials

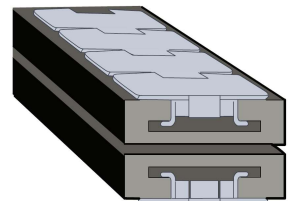
- **Black repro uhmw** : economical, wear resistant, Coef. 0.15/0.20
 - **Nylon MD** : high speed, long conveyors, heavy loads, Coef. 0.20
 - **Dry Lube** : wear resistant, no lubrication required, Coef. 0.10
 - **Oil filled** : Sticky, releases oil with friction, Coef. 0.06/0.12
- Contact CRS/VAMIC for more details.

HOW TO ORDER:

Specify :

- Chain Type and width (a) Ex: #880, 4-1/2
- Style (b) Ex: Tab
- Radius dimension (c) Ex: 24"
- Number of lanes (d) Ex: Double lane
- Angle (e) Ex: 45o
- Material (f) Ex: Black UHMW
- Thickness and width of track (g) Ex: 1" x 10"

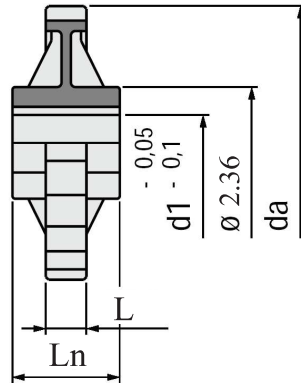
Straight Tracks



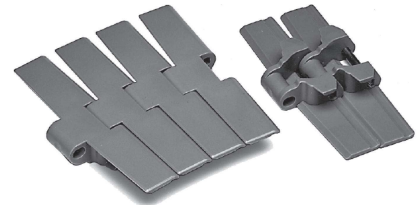
Straight tracks are available. Please specify length required.

Split Sprocket #882, 882-Tab

Material: Sprocket in reinforced polyamide (black).
Bolts in stainless steel AISI 304, nuts in nickel plated brass.

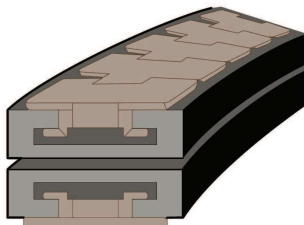


Chain #882-TAB

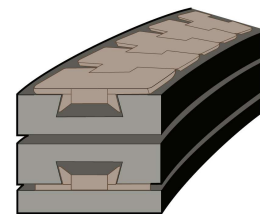
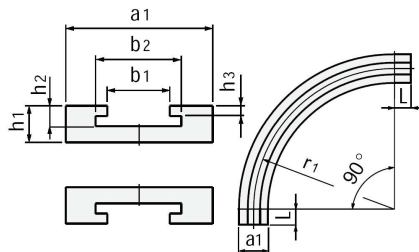


Part #	# Teeth	da	L	Ln	Bore d1
882-663601	12	5.90	0.874	2.30	1
882-619072	12	5.90	0.874	2.30	1-1/4
882-619082	12	5.90	0.874	2.30	1-1/2

Corner Tracks



TAB type

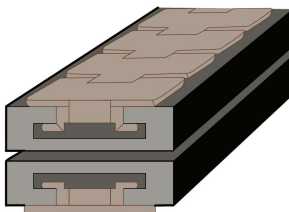


Bevel type

Materials

- **Black repro uhmw** : economical, wear resistant, Coef. 0.15/0.20
 - **Nylon MD** : high speed, long conveyors, heavy loads, Coef. 0.20
 - **Dry Lube** : wear resistant, no lubrication required, Coef. 0.10
 - **Oil filled** : Sticky, releases oil with friction, Coef. 0.06/0.12
- Contact CRS/VAMIC for more details.

Straight Tracks



Straight tracks also available. Please specify length required.

HOW TO ORDER:

Specify :

- | | | |
|--------------------------------|-----|----------------------|
| - Chain Type and width | (a) | Ex: #882, 10" |
| - Style | (b) | Ex: Tab |
| - Radius dimension | (c) | Ex: 36" |
| - Number of lanes | (d) | Ex: Single lane |
| - Angle | (e) | Ex: 90o |
| - Material | (f) | Ex: Nylatron |
| - Thickness and width of track | (g) | Ex: 1-1/4" x 10-1/2" |